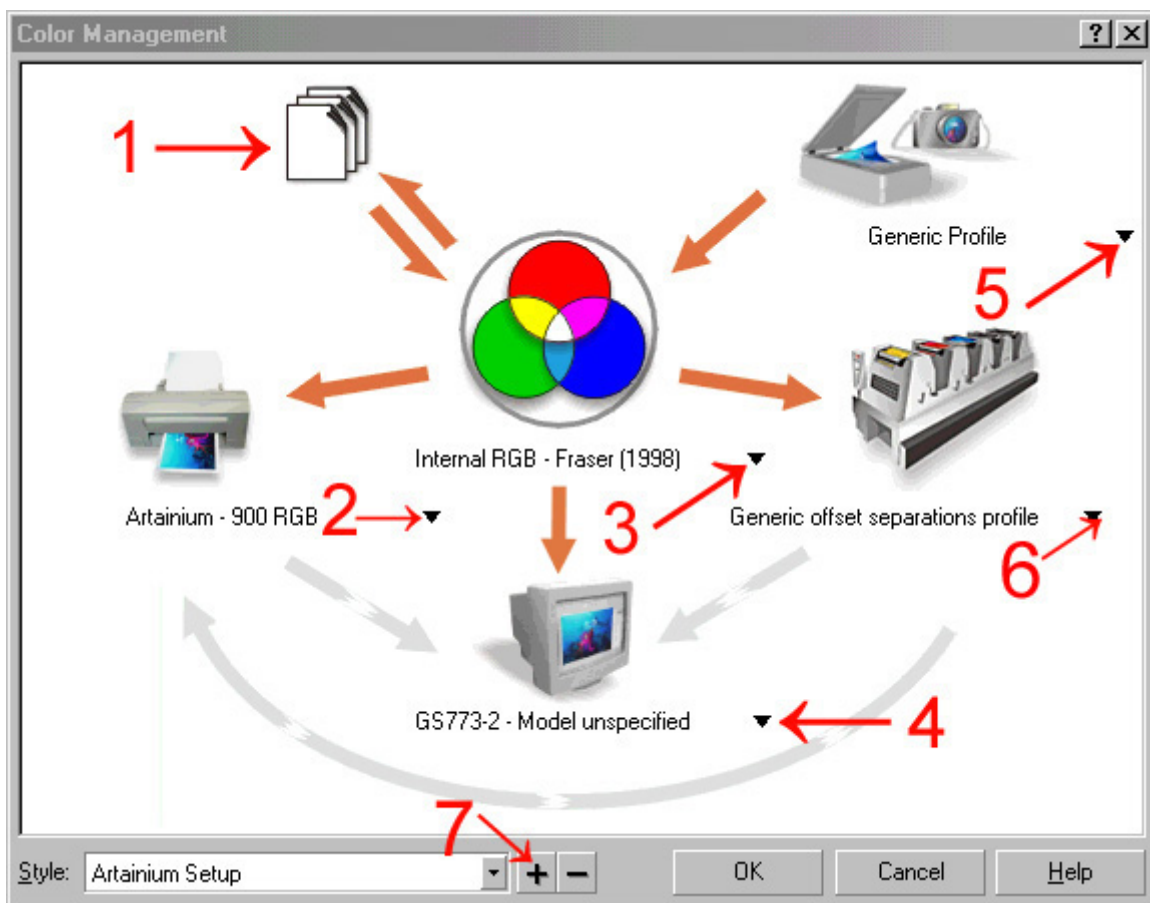


# Corel Draw 10/11 – Color setup and printing with the Artainium ICC Profile

Corel Draw's color space needs to be set to the working space of which the Artainium ICC Profile was created. This then allows for a more accurate screen display of your images. The accuracy of the displayed image on your monitor will highly be dependent on the quality of your monitor and more important a calibrated monitor ICC profile.

Open the Color Management Options window **Tools – Color Management...**

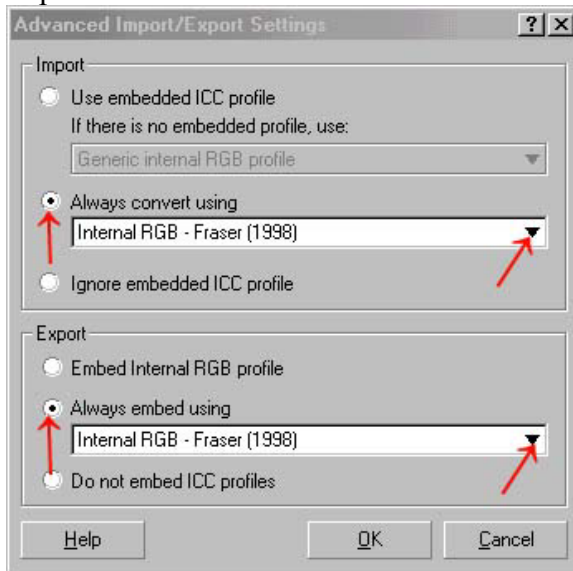
**Note:** You must have an image or blank page on-screen to select this option



Here We will configure Corel's default color space and ICC Profiles.

First, all the (Orange/Grey) arrows need to be set as shown above. To change the color of the arrows (Orange color switched on – Gray color switched off). To turn the arrows on or off just click on the arrow itself.

**1 Configure Import-Export Settings** (Click on the image of the paper to bring up the window shown below. This window configures how corel 10 handles files that are imported to a document



**Click Import: Always convert Using-** Select **Internal RGB – Fraser (1998)** from the drop down menu

**Click Export: Always embed using-** Select **Internal RGB – Fraser (1998)** from the drop down menu

Click **OK**

**2 Composite Printer:** Select the Artainium ICC printer profile. **Note:** if you cant choose the Artainium RGB profile from the drop down menu Means the ICC profile is not yet installed on your pc or you may not have restarted Corel since the ICC installation. Close and re-launch Corel.

**3 Internal RGB Space:** Select **Internal RGB – Fraser (1998)**

**4 Monitor:** Select the ICC profile for your monitor ( If you also have Adobe Photoshop on your system you can select the profile you created in Adobe Gamma) You may also check out the website of your monitor manufacture for ICC profiles for your particular monitor. Download it and install it to **C:\Windows\System\Color** and restart your pc.

**5 Scanner:** Again select your scanner ICC profile. If your scanner is not listed, check out the website of scanner manufacture for ICC profiles for your particular scanner. Download it and install it to **C:\Windows\System\Color** and restart your pc.

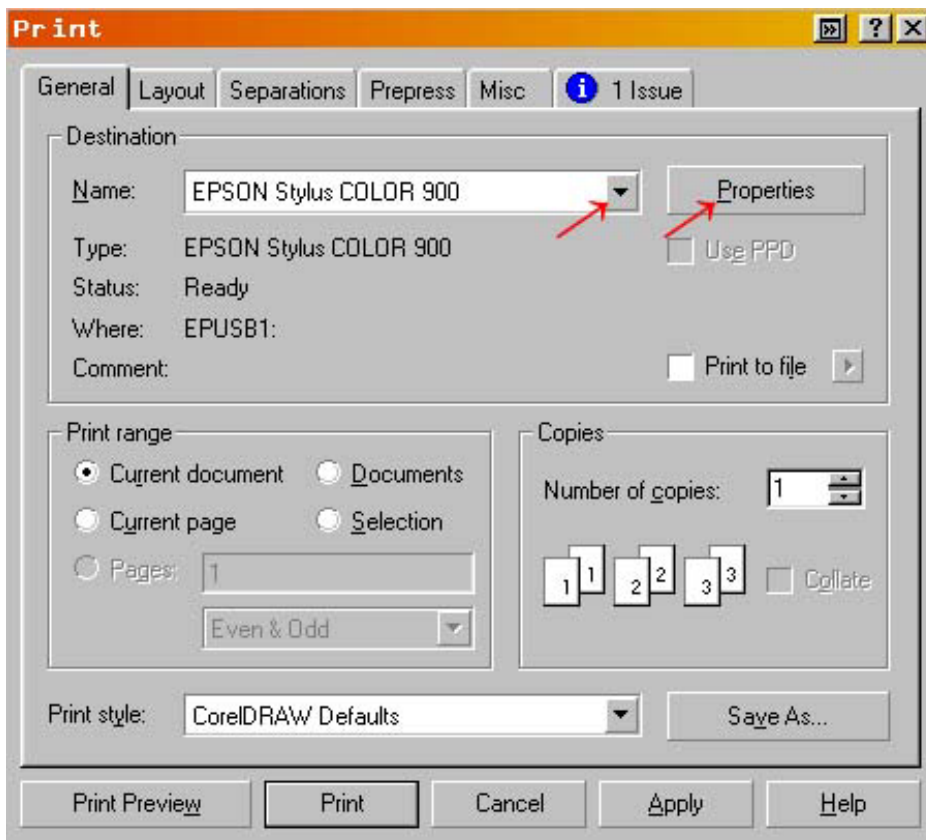
**6 Separations Printer:** Not used or set to your current device if you print separations

**7 Save your settings:** Click the **+** button and name your settings  
Click **OK**.

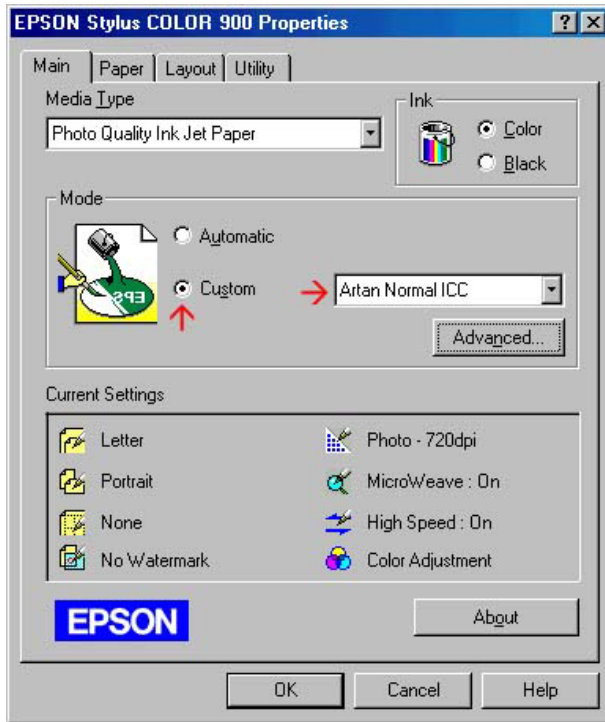
Corel's color space and printer ICC is now set to use the same space that the Artainium ICC profiles were created.

You can now work with an image as normal.

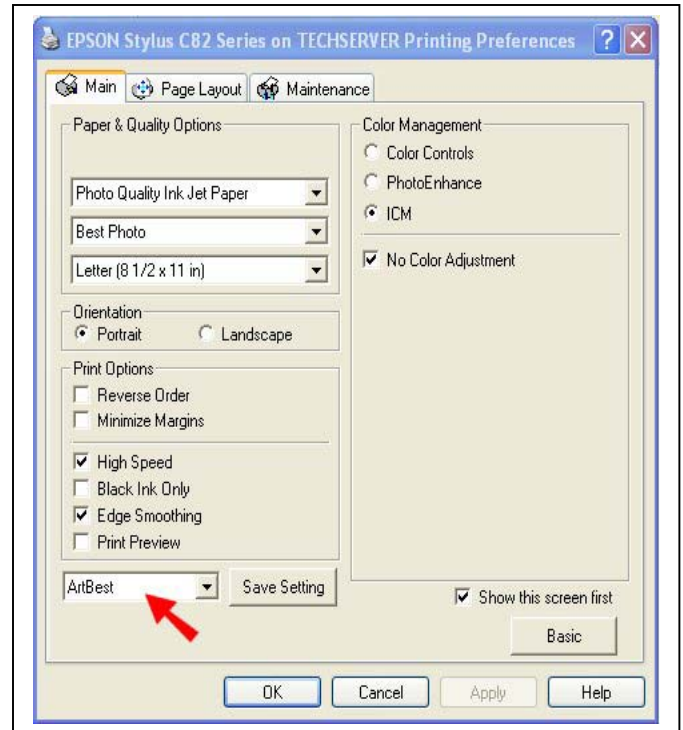
When your image is ready to print-  
Click **File – Print**



Select your printer and click **Properties**



Old style printer driver :- 3000, 900,  
980, C80, 1280



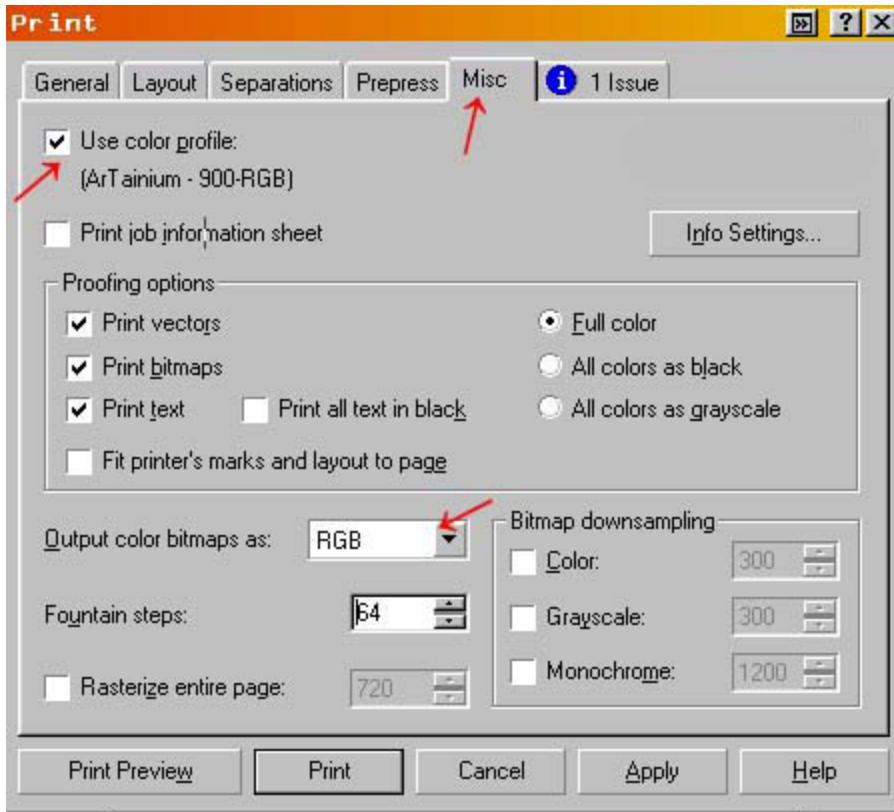
New style printer driver :- C82, 2200

Click the **Custom** Button

Select the Artainium print setup profile created when you configured the Epson print driver in [Step 2](#)

You can click Advanced to double-check your settings

Click **OK** (takes you back to the previous screen)



Click the **Misc** Tab

**Check Use Color Profile.** You should see the name of the Artainium ICC profile next to the check box as shown above.

**Output Color Bitmaps:** Should be set to **RGB**

Click **print**

Corel will now print your image using the Artainium ICC profile combined with the configured Epson print Driver

**Note:** if the Artainium RGB profile is not shown next to the Use Color profile check box Means the ICC profile has not been set up in the global color management, is not yet installed on your pc or you may not have restarted Corel since the ICC installation. Close and re-launch Corel.