

# Configuring Photoshop 7 (PC) Color Settings

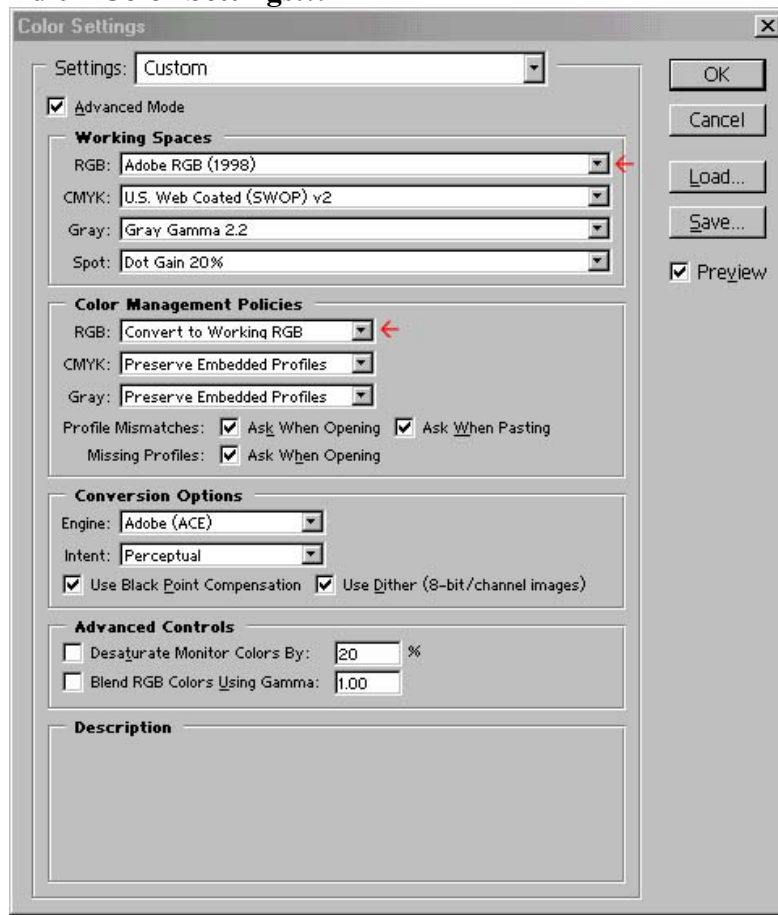
Photoshop's color space needs to be set to the working space of which the Artainium ICC Profile was created. This then allows for a more accurate screen display of your images. The accuracy of the displayed image on your monitor will highly be dependent on the quality of your monitor and more important a calibrated monitor ICC profile. Photoshop's Adobe Gamma will allow you to calibrate and save an ICC profile for your monitor.

If you have not already done so, follow the steps below to set up your monitor and Photoshop.

Use **Adobe Gamma** located in the **Control Panel** folder to set up your monitor  
**Start – Settings – Control Panel** Double click the **Adobe Gamma** Icon and follow the on-screen wizard and save your adjustments.

Start Photoshop 6 and bring up the color settings window

## Edit – Color Settings...



Set the **Working Space RGB:** to **Adobe RGB (1998)**

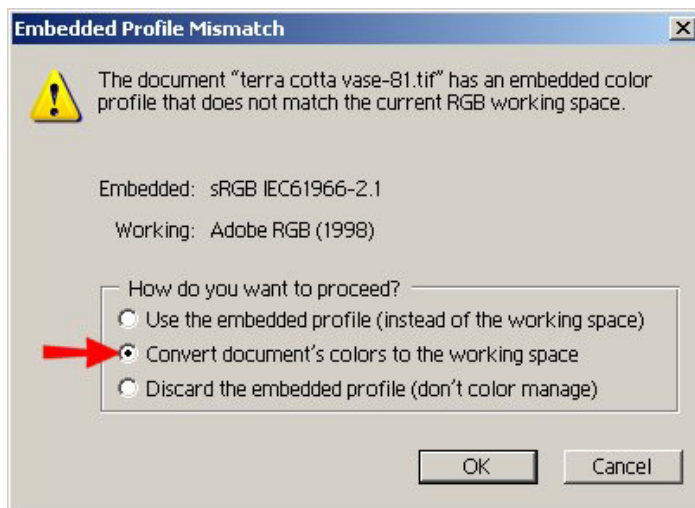
Set the **Color Management Policies** to **Convert to Working RGB**

Leave the other settings as shown above

Click **OK**

Photoshop's RGB working space is now set and adobe gamma is controlling your monitor profile.

When opening images in Photoshop, you may encounter a profile mismatch Warning.

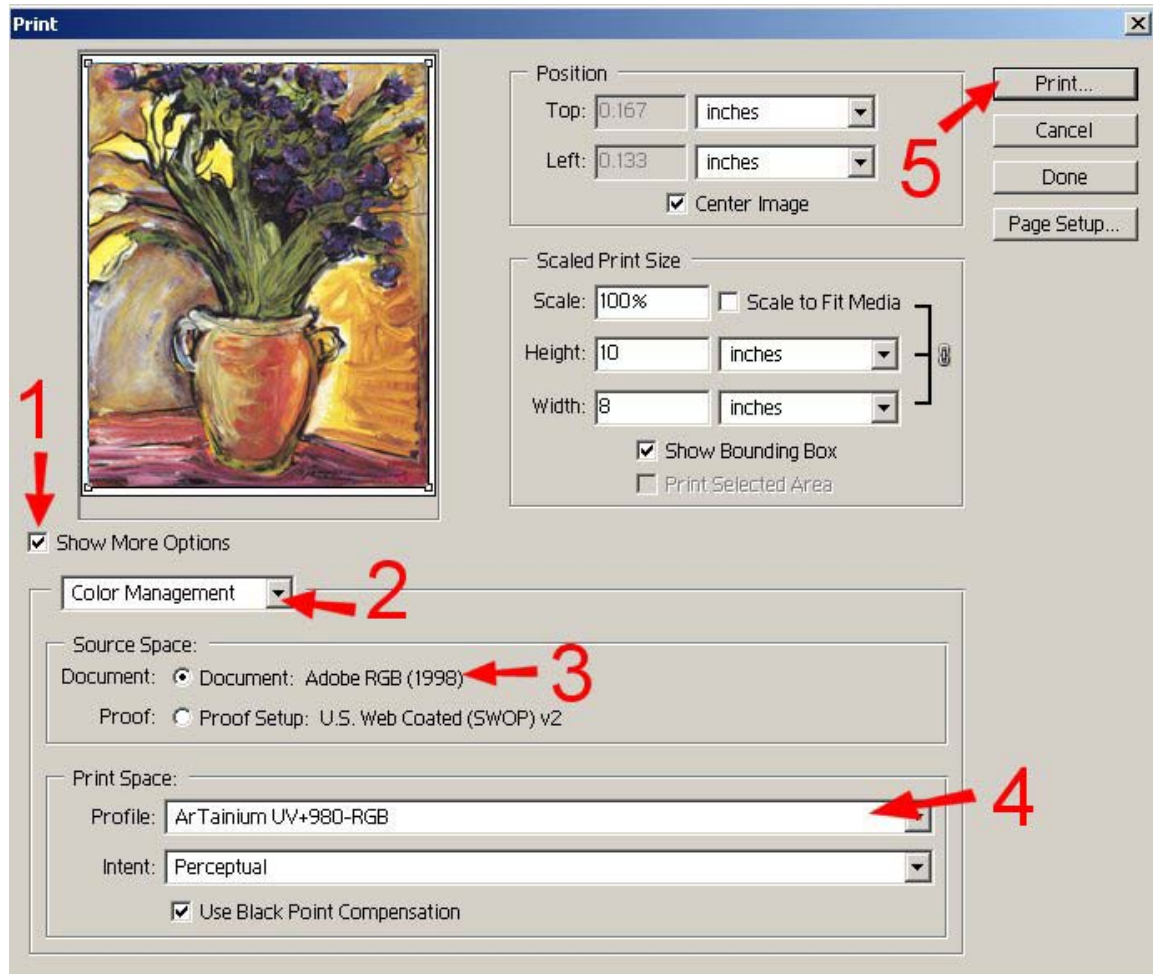


**Select Convert document's colors to working space and click OK**

Work on your images as normal and follow step – Printing images from Photoshop using the Artainium ICC Profile.

# Photoshop Printing with the Artainium ICC Profile

When your image is ready to print, Click **File- Print with Preview...**



**Click Show More Options 1** This will expand the window shown above

**Click the drop down arrow 2** and choose **Color Management**

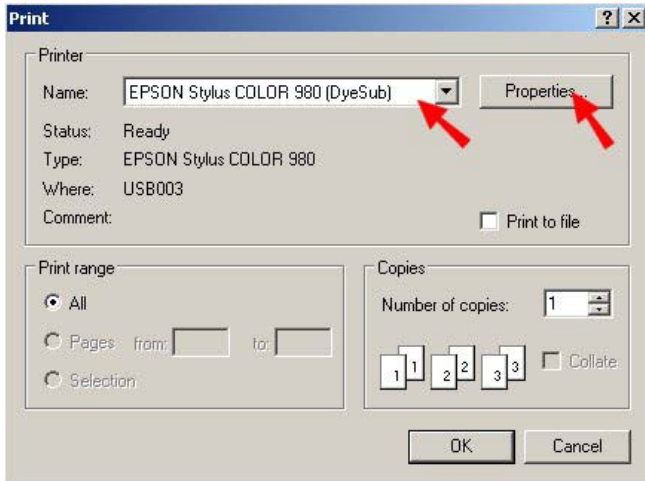
This will expand the window as shown above.

In **Source Space: Click Document 3**

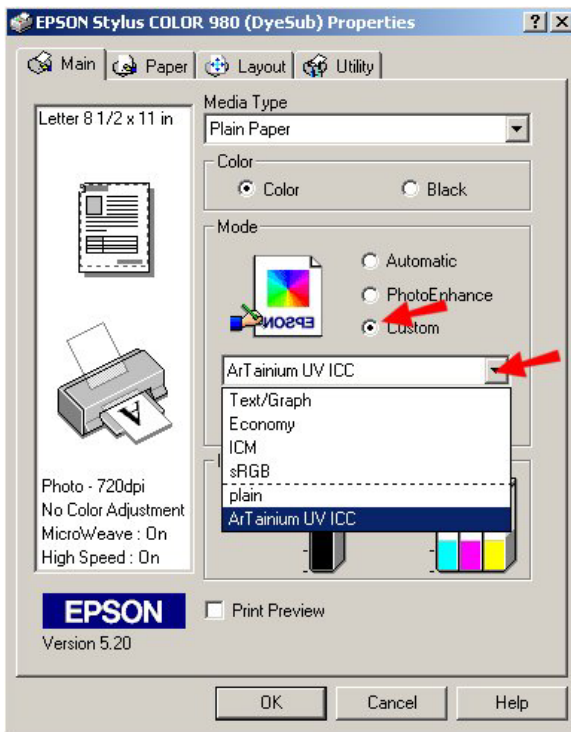
From the drop down menu for the **Print Space: Profile: 4** Select the ArTainium ICC Profile for your printer

Click **Print 5**

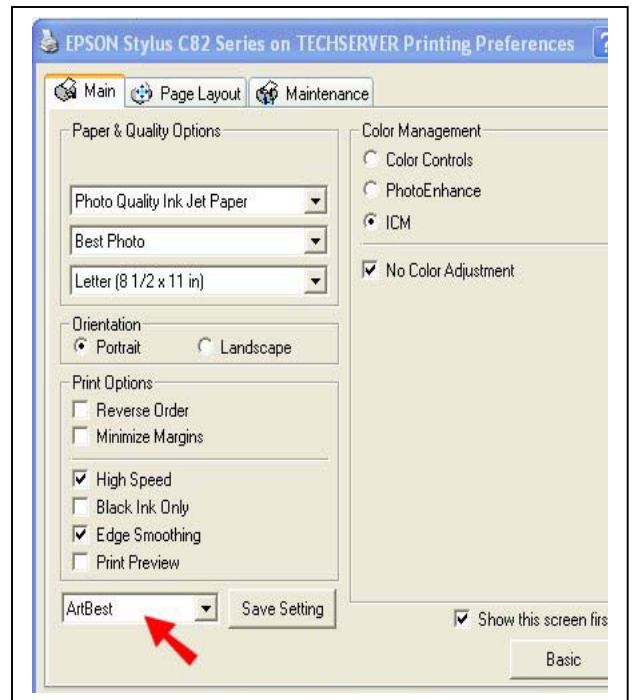
Note: If you don't see any reference to Artainium RGB in the print space list means the ICC profile is not installed in your system or Photoshop has not been restarted since the profile was installed (Restart Photoshop)



Select your printer and click **Properties...**



Old style printer driver :- 3000, 900, 980, C80, 1280



New style printer driver :- C82, 2200

Click the **Custom** Button

Select the Artainium print setup profile created when you configured the Epson print driver.

You can click Advanced to double-check your settings

Click **OK** and Click **OK** to print

Photoshop will now print your image using the Artainium ICC profile combined with the configured Epson print Driver.